



NOVEMBER 2024

WWW.IBEW11.ORG

THE NEWSLETTER OF IBEW LOCAL 11

# NEWS @11



IMAGES COURTESY ON TARGET ELECTRIC

Thousands of LADWP customers have taken advantage of the Commercial Direct Install (CDI) program since it launched in 2013.

## LADWP Customers Find Their New Energy-Efficient Lighting 'On Target'

By Evan Henerson

For more than a decade, on an ongoing basis, Local 11 electricians have been working to make the lights of L.A. not only shine more brightly, but more efficiently, and

at a huge savings to the customers who pay the bills.

Tens of thousands of customers of the Los Angeles Department of Water & Power (LADWP) have taken advantage of the LADWP's Commercial Direct Install (CDI) program since its launch in 2013,

according to Rubio Rubio, a 29-year member of Local 11 whose company, On Target Electric, oversees the upgrades. From schools, libraries and fire stations to warehouses, churches, and apartments — and everything in between — these

*(Continued on page 6)*

## From Congress to Bond Measures, Local 11 Made its Voice Heard

With the Nov. 5 election in the rearview mirror, IBEW Local 11 Business Manager Robert Corona stresses unity moving forward despite any political differences.

“Campaign season is over, let us focus on our core mission – organize the unorganized and fight like hell for working families,” Corona said. “IBEW Local 11 members will still face the same issues, and we need to come together to conquer them.”

“Now more than ever, we will need to unite in solidarity and continue



the fight for what is important to our IBEW family - prevailing wage laws, workplace safety and protections, and the right to organize and bargain collectively.”

The results of the Nov. 5 Presidential election saw several victories thanks in large part to the efforts and

dedication of Local 11 members.

### George Whitesides defeated Mike Garcia to win California's 27th Congressional District

After weeks of Local 11 brothers and sisters knocking on doors and

*(Continued on page 7)*



Taking Care of Your Health



Bass Secures Federal Investment for Port of Los Angeles



An Introduction to the Electrical Industry



# BUSINESS MANAGER'S MESSAGE

By Robert Corona

## Reasons to Give Thanks This Thanksgiving

**B**rothers & Sisters, Happy holidays to everyone! I want to wish you all a joyous time this holiday season.

I'm just back from the 70th annual IFEBP Employee Benefits convention in San Diego this year. The International Foundation of Employee Benefit Plans brings together trustees from labor unions nationwide, with keynote speakers from across the economic, healthcare and pension world to discuss the latest best practices to help our members. Our job is to make sure your benefits are working for you.

I am now a graduate of the

Trustees Master Program (TMP), which offers advanced information designed specifically for trustees. These ongoing courses help us explore challenges and opportunities for various funds and what the future may hold for these plans. We learn practical tips and skills and hear from veteran financial experts.

There was a lot of good information for me to bring back to our local. As you may know, as head of this local, I am a trustee on three of our retirement and benefit plans - our health, pension and JAC apprenticeship plans. At the convention, we learned the latest new avenues and vehicles to help you put more money away for your

retirements, such as offering a 401k type of self-directed annuity. We will have more news about this in the near future.

### A final thought on the election

I want to thank all our members who volunteered and voted in the recent election. Although things didn't go as we had hoped at the top of the ticket, we had some good local wins, which will create more work for our members in the coming years. You can read about them in this newsletter.

George Whitesides' win in the Antelope Valley was huge for us and we can take much of the credit. Our members and their families volunteered to knock on IBEW members' doors to discuss the issues, and why Whitesides was the best choice for our members. We also encouraged our members to vote, and in the end, it paid off.

We also won Prop A and several bond measures that will bring us work for years to come.

### Work Picture

With interest rates dropping again this past week, expect more

work to start again in the new year. That's what developers count on - lower interest rates to get their projects up and running.

The holidays are always a slow time, but for those of us who have been on the job for a long time, we know about the cyclical nature of our business. I understand that this may be the first downturn for many of our newer members, who have only experienced growth. But know that there is work in the pipeline that will be coming our way soon. We have infrastructure work on the horizon.

Also, we look to a few of our big projects coming our way: the LA convention center remodel, which will need all hands on deck. Rosendin will be the major contractor on this project. There's also the Burbank airport remodel, where CSI has a contract. And of course all the ongoing work at LAX.

So be safe this holiday season. As I always say, Kiss the ones you love today, because tomorrow is not promised! Union Strong!

*In Solidarity,  
Robert Corona  
Business Manager*

But know that there is work in the pipeline that will be coming our way soon. We have infrastructure work on the horizon.

## IBEW 11's NEWS@11

### President

Alton Wilkerson

### Vice President

Kelly Oliver

### Main offices of IBEW Local 11

297 North Marengo Avenue

Pasadena, CA 91101

(626) 243-9700 Phone

(626) 243-9750 Fax

www.ibew11.org

### RECORDING SECRETARY

Irene Valenzuela

### TREASURER

Gary Tomlin

### BUSINESS MANAGER/FINANCIAL SECRETARY

Robert Corona

### Produced by Senders Communications Group

**PUBLISHER:** Cherri Senders

**MANAGING EDITOR:** Robert Fulton

**ART DIRECTOR:** Mike Kritzer

www.SendersGroup.com



# Post Election Thoughts and Time for Your Health Check-Ups

**A**s the big election is over, the outcome was not what we wanted overall. But this let's us know we need to buckle down and get ready to get our hands dirty because we have some work to do.

Luckily, we did have a few victories for labor on the local level. We are pleased that all of our hard work on the George Whitesides campaign paid off. We are looking forward to changing the 27th district to a more labor friendly area that our members can benefit from. I want to thank all the members that precinct walked, phone banked, and took time with and away from family members in order to fight for

what we believe in.

On another note, I want to remind members to please schedule your yearly check ups with your doctor. Preventive maintenance on your body is always better than emergency visits that are caused by things that could have been detected early. Call your doc today to set up your yearly physical.

Also utilize Body Scan International. I recently did it and it gave me a lot of good insight on what's going on inside of me right now, and it finally felt good to have a visit where I was told my weight is going in the right direction haha. That part I contribute through a program we have through Anthem Blue

Shield called Betr Health. Please look into it, if you're interested in a lifestyle change for the betterment of your health. Don't worry about breaking out the food scale, this plan isn't strict like that. Feel free to reach out to me if you want a little more info on it before you contact them.

Brothers and Sisters, it is a pleasure to serve you in this capacity. Don't hesitate to give me a call, text, or to let me know of a job site I may not know about that you'd like me to visit.

*In solidarity,  
Alton Wilkerson  
#7646570  
IBEW Local 11  
President*



## Care and support for your emotional wellbeing



Free service for members!

Access code: SCIBEW

Scan or click for more info or go to [liveandworkwell.com](https://liveandworkwell.com)

**DISTRICT 4**  
Gary Tomlin

My Brothers and Sisters,

The Holiday Season is upon us. The District 2 December Holiday Meeting will be held at the Hollywood Sports Event again this year on Wednesday Dec. 4 at 5 p.m. at 9030 Somerset Blvd in Bellflower. This year, the arcade center will be open for the kids to use.

- Shultz will be calling out for roughly 40 to 60 journeymen and apprentices over the month of November for both Marathon Refineries sites. RSO and TWIC are both required for these sites.
- In some unfortunate news, it was recently announced that Phillips 66 will be closing their refinery by the end of 2025.
- There is a new Fire Station being built in Long Beach; Ornelas Electric was assigned to this project.
- Precision Electric has multiple large scale roof top solar projects in District 2 and surrounding areas.
- ESSCO and Whealan Electric both are working at the Long Beach Police Training Facility.
- Taft Electric will be on the upcoming new parking structure at the Long Beach VA Hospital.

**DISTRICT 4**  
Brett Moss

Brothers and Sisters

Greetings from District 4. I hope this report finds you and your families well.

We had our Fourth Annual Chili Cook Off a few weeks ago and congratulations go to Brother Daniel Mendez for his winning entry. A big thank you to all members and family that attended and who volunteered to make the event a huge success.

Work in the area is still slow like the rest of the Local, but we have had calls coming in for D4, notably to the Glendale Power Plant. We continue to see calls for LACCD and LAUSD projects.

A reminder, D4 unit meetings are on the first Tuesday of the month at 5 p.m. at the D4 Hall, please join us. The D4 welfare committee meets the last Tuesday of each month at the D4 Hall, if you need assistance, please contact me.

Stay safe and be well. Always feel free to reach out via email, phone or text.

**JACKIE WALTMAN**  
CE/CW

Hi Everyone,

As we move into Fall, we still are experiencing some warmer than normal days. Remember to stay consistent with your hydration and get into the shade as needed.

Please make sure that you are keeping up with your classes/education to keep your ET card valid. Don't wait until the last minute to renew it.

Remember to make yourself available on the daybook each day you want to take a job call. This must be done by 8am in the dispatch halls or online.

It is an honor to represent you. As always,

please contact me if you need any assistance.

Remember to look out for one another and to be safe out there.

**MANUFACTURING AND INDUSTRIAL**  
Kristian Mendoza

Hello, hope all is well with you and your families and you are staying safe. It has been busy with all of the election activities and I'm grateful for the opportunity to serve our membership. While we didn't get the results we wanted, now is the time for us to stand together as Union members and be strong.

- Kinkisharyo is moving with the P2550 contract, the Olympic P3010 bid process is scheduled for January 2025. Hyundai has subcontracted Kinkisharyo to build the heavy rail trains for L.A Metro and that will start mid to late 2025 or early 2026.
- Covanta: The decommissioning process was complete November 8th and our last members there will be receiving a healthy severance package. We are working with the City of Long Beach to help these members secure new employment opportunities.
- The Supervisor Association Metropolitan Water District "SAMWD" are continuing to work hard to finish up the last few items in the reopener but as of right now are at a standstill.
- EAA: we are still pushing forward on the organizing campaign to get the LA City Council Aides the representation they deserve, and also in a continuous campaign to get every EAA member signed as IBEW Local 11 members as well.

Any questions or concerns about Manufacturing or Industrial please feel free to contact me.

**SOUND & COMMUNICATIONS**  
Deon Mayes

Dear Sisters and Brothers,

I'd like to express my sincere gratitude for the warm welcome I have received since

transitioning to the role of BA. Your positive words and support have been humbling, and I am honored to have the opportunity to represent you all.

As we look at the work on the horizon, it's important that you maintain current certifications and state licenses. To avoid delays when renewing your state licenses, you should submit your renewal application early. We recommend submitting it at least a year prior to expiration. Keeping your certs and licenses current will help prevent missed job opportunities.

It's also important that your dues remain current. Being late just one day jeopardizes benefits you've earned for you and those you love.

Lastly, we'd like to invite all Unit 9 Members to join us on December 14th for our holiday party. Family is not only welcome but encouraged!

**DISTRICT 6**  
Tommy Zielomski

Greetings from District 6, Brothers and Sisters,

The end of the year is near, and the Holiday season is coming fast. District 6-unit meeting dates for November and December have been changed to work around the holidays. November's meeting date is now Tuesday November 26th at the District 6 hall in Diamond Bar. We will be having a tamale dinner after the meeting. On December 18th, we will be having our meeting/Christmas Party at VFW Post 8070 in the city of Azusa at 5 p.m. There will be plenty of food, beverages and raffle prizes as well as Brotherhood and Sisterhood to go around. This is a family friendly event, so please bring your family. The unit meetings are a great way to get involved and to be informed in your local union, so we encourage members to attend your meetings.

Just a reminder, the inside wireman have an allocation meeting scheduled for November 23 at 9 a.m. at the ETI. Hope to see you all at these upcoming meetings.

Have a safe and happy holiday season.

**COMPLIANCE REPORT**

**ECU Application Tips**

By Veronica Martinez

In October, Business Manager Robert Corona and the Compliance Team met with the new Chief of Licensing & Registration Unit at the Department of Industrial Relations. The Chief oversees all aspects of the Electrical Certification Unit (ECU). During our meeting, we were informed that the ECU's application process has been reduced to 5 weeks due to increased staffing. Here are some additional takeaways I wanted to share:

- Typed-out applications are preferred.
- Always include your email address.

- Cure defect items. The most common defects include incomplete or illegible applications, Incorrect fee submissions, or failure to provide required documents.
- Submit traceable money orders or cashier's checks to prevent issues with returned checks.
- Retest applicants must wait 60 days before the date of the last exam to retake the exam (California Code of Regulation rule).

A lapse in certification is highly discouraged. A lapse automatically prompts a retest, and statistically, 50% of test-takers fail the test.



**DISTRICT 2**  
**Myra Hildreth**

Hello District 2 Brothers and Sisters,

I attended the Trade Woman Build Nation in New Orleans as a delegate. 5,200 tradeswomen participated in the conference, and it was great to see many Local 11 members in attendance.

Organizing continued with job walks at non-union job sites in District 2 throughout the last month. Several new potential candidates contacted me through connections in the field and through word of mouth from current candidates.

Recently, our organizing team attended an LA Supervisor Meeting in support of HECATE's proposal to construct a 400-megawatt Battery Storage facility in Acton, CA.

November is National Gratitude Month, a valuable opportunity to express appreciation. Practicing gratitude enhances our mental and physical well-being and fosters a positive mindset. Let's take this time to recognize the meaningful aspects of our lives.

**DISTRICT 4**  
**Ruben Mendoza**

Greetings from District 4,

As an Organizer, I organize Inside Wireman, Apprentices and assist with Sound & Comm, Transportation and Railroad electricians.

In October, I attended the 2024 Railroad & Government Conference. The sessions were very informative, learning the process of claims, grievances and the hearing process for Railroad Electricians.

The Keynote speaker was Congressman Donald Norcross, an IBEW Railroad electrician with a yellow ticket in hand. He spoke on how exciting it is to finally

be getting two High Speed Rail systems in California. The first is the Brightline West High-Speed Rail from Las Vegas to Rancho Cucamonga and from there to the City of Los Angeles.

The other High-speed Rail CAHSR Project will be from Fresno to Bakersfield, and Palmdale to Burbank. Both of these projects will be built by IBEW members.

**DISTRICT 6**  
**Chris Rosales**

Season's greetings brothers and sisters!

As we continue to hit non-union job sites, I would like to take a moment to revisit the importance of organizing. Organizing non-union electrical workers allows IBEW Local 11 to increase its membership base. A larger membership translates to greater financial resources, enabling the union to invest in training, representation, and community initiatives. By bringing non-union workers into the fold, IBEW Local 11 can strengthen its collective bargaining power. A larger and more unified workforce can negotiate better wages, benefits, and working conditions, making unionized work more attractive to potential members.

Organizing non-union workers allows IBEW Local 11 to elevate industry standards across the board. When more electricians are unionized, it promotes a culture of safety, quality, and professionalism. This shift can lead to improved working conditions not just for union members, but for all workers in the electrical field, raising the bar for the entire industry.

**CONTRACTOR ORGANIZER**  
**Benjamin Frank**

As fall arrives, I would like to extend warm holiday wishes to all our members and their families.

I am pleased to announce our new partnership with L.M.S. Electric. We first met with owner Louis Server of this 74-person team in 2020 to explore the benefits of becoming signatory, and through ongoing communication, they have chosen to join us.

L.M.S. brings specialized expertise in electrical construction, including service work, multi-unit residential projects (with a focus on homeless housing ULA), and commercial and industrial projects.

They will operate under the Inside Wireman's, Residential, and CE/CW agreements, providing new opportunities for both our out-of-work members and those seeking fresh experiences. The majority of their work will be in Los Angeles and nearby Southern California areas. Be on the lookout for job calls from the hall beginning in 2025!

**SOUND & COMMUNICATIONS**  
**Citlali Castillo**

Hello, Unit 9,

It's a good time of the year to remind our members about getting certifications that may be requested once job calls start coming in quick for the new year.

We stay busy in the organizing department, going to nonunion jobsites is one of the daily things we do, and speaking to these unrepresented workers about the benefits of being union.

One of those great benefits is speaking about all the certifications that can be obtained from our very own hall. To members that work with these nonunion contractors, talk about the holidays, family and bring up local 11. Everything we do is for the people we love, and those certifications can take our careers a long way. Sign up for those classes.

See you all at the Holiday party on December 14! Stay Safe.

# Building a Greener L.A.: Mayor Bass Secures Largest-Ever Single Federal Investment for Port of Los Angeles Environmental Efforts

Los Angeles Mayor Karen Bass recently announced more than \$402 million in secured federal funding from the U.S. Environmental Protection Agency (EPA) Clean Ports Program, which will support efforts to reduce emissions and create a new community-led zero-emission grant program. According to the Mayor's office, this is the single largest funding amount that the Port of Los Angeles has ever received. Paired with the \$500 million Climate Pollution Reduction Grant awarded by the EPA to reduce pollution related to goods movement in Southern California, this makes for

nearly \$1 billion in funding to reduce pollution in port communities.

"With this funding, the nation's busiest port will be able to continue to reduce greenhouse gas emissions and improve air quality," Mayor Bass said. "Together, in partnership with the federal government, industry, labor, and environmental justice groups, we are building a greener and healthier Los Angeles. L.A. will continue to lead on innovative infrastructure and sustainability."

According to the Mayor's office, the \$412 million in funding will enable the Port to purchase zero-emission yard tractors, drayage trucks, port handlers, heavy

forklifts, battery electric storage systems, chargers and more.

"This one-in-a-generation investment will be a tremendous boost to our efforts to meet our ambitious zero emission goals, improve regional air quality, and combat climate change, while accelerating the port-industry's transition to zero emissions across the country," said Port of Los Angeles Executive Director Gene Seroka. "This successful application is the culmination of a deep



partnership with environmental justice groups, labor, the private sector, and stakeholders at all levels of government, and we'll continue to work with our fence-line communities to ensure this investment delivers benefits in their neighborhoods."



## DWP RETROFITTING

Continued from page 1

customers have seen their lights switched from T12 to T8 lamps in the early years of the program and more recently to include LED exit signs. These efficiency upgrades are for non-residential electrical customers whose average monthly use is 250 KW or less and come at no cost to the customer.

The first project undertaken with the program rollout was the Super Mercado Latino supermarket on Martin Luther King, Jr. Boulevard, and projects have continued from there with nearly 21,000 businesses taking advantage of the program in the first six years. Even a certain smiling feline can now do his chuckling with greater visibility.

“Have you driven down the 110 Freeway through downtown

toward San Pedro? By USC, there’s Felix Chevrolet, right? We did all of their outside lighting,” Rubio said. “When you drive by at night, you can see how bright it is.”

“It’s all businesses, thousands and thousands of jobs,” he continued. “Some of them are small and might take us a couple of hours. Some, like the schools, are big enough that it could take us weeks to do.”

Rubio notes that a T8 lamp burns 32 watts of power compared to the LED replacement which burns at 17 watts. Some of the 400-watt lights are being swapped out for 60-70 watt replacements. LADWP estimates that the amount of energy savings is equivalent to taking 39,000 homes off the grid and reducing greenhouse gas emissions by nearly 90,000 metric tons per year. The clients, meanwhile, have seen their energy

“It’s all businesses, thousands and thousands of jobs. Some of them are small and might take us a couple of hours. Some, like the schools, are big enough that it could take us weeks to do.”

— Rubio Rubio, On Target Electric



IMAGES COURTESY ON TARGET ELECTRIC

LADWP estimates that the amount of energy savings from the Commercial Direct Install (CDI) program is equivalent to taking 39,000 homes off the grid.

bills drop by as much as 40 percent.

“That’s a much bigger bang for their buck, a lot more savings,” Rubio said.

When On Target began the work, the company used six energy service representatives (EDSR) working the retrofitting jobs. As the program ramped up, the number of workers – all of them

Local 11 apprentices, journeymen, and foremen of course – grew to between 30 and 40.

“Historically, the retrofitting market has been non-union,” Rubio said. “Since this program has come out, it’s been union. I’ve been Local 11 since 1995 so I wouldn’t go hire non-union guys now that I’m a business owner.”

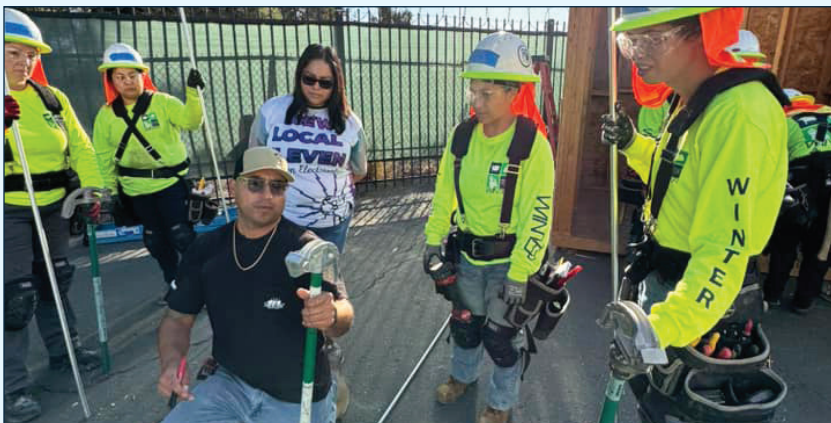




# WINTER Class: An Intro to the Electrical Industry



Staff members of Local 11 and Apprentice Ryne Spaulding visited WINTER (Women In Non Traditional Employment Rolls) pre apprenticeship class, to put on some conduit bending and circuitry basics class to give them an introduction to the electrical industry.



## ELECTION

*Continued from page 1*

handing out flyers in an effort to elect George Whitesides and defeat Mike Garcia, we got the word late that our hard work paid off. Garcia, who consistently voted against legislation that would empower workers, has been sent packing in favor of Whitesides, who promise to fight for us.

### School Bonds

From the Antelope Valley High School District to Burbank USD, to Long Beach City College, all the school construction bonds on the ballot in LA County are highly likely to be approved. The result is

billions of dollars of public work projects that will be coming soon. And it gets better. Almost 20 local school bonds that will be approved will be covered by a project labor agreement and will be leveraged with state dollars. These election results will bring more local work for our members.

The biggest of these school bonds is Los Angeles Unified School District's **Measure US**, also called the "Local Public Schools Safety and Upgrades Measure." This is a \$9 billion bond to upgrade and improve school facilities. Widespread campus modernization will lead to construction jobs. More than 60 percent of school buildings are more than 50 years old and in

need of improvements.

Also noteworthy is **Measure AC in Long Beach**, a college facilities bond measure to complete repairs and upgrades to Long Beach City College facilities. Also called the "Long Beach Community College District affordable education, classroom repair, career and first responder training improvement measure," AC will authorize \$990,000,000 in bonds. The measure will create numerous job opportunities

### Measure A

In addition, LA County voters are also likely to approve **Measure A**. Measure A funds will help combat homelessness and build affordable

housing, under a project labor agreement. This is our way back into the residential market. Also called the "Affordable Housing, Homelessness Solutions and Prevention Now" measure, Measure A will replace a quarter-cent sales tax with a half-cent sales tax to help fund housing and homeless services. Money from the tax, forecast to generate about \$1.2 billion annually, will go toward affordable housing, mental health care, and substance abuse treatment, among other homeless services.

### State ballot measure Proposition 2

Proposition 2 passed, a \$10 billion school facilities construction bond and endorsed by IBEW Local 11.